

GOOD LOOKS:

Local talent

Accessories International Inc. manufactures products inspired by ancient classical furnishings. The line, mostly designed by owner and CEO Salman R. Shah, is shown in April and October at the

International Home Furnishings Market in High Point, N.C., and will be in a new design-trade-only showroom opening soon

at the Decorative Center of Houston. One striking design introduced at fall market is the Biedermeier Bench (1), made of aluminum with a variety of finishes available, and sold at a suggested retail price of \$3,000.

The ARTEC Group Inc. in The Woodlands is going to the Dallas market this summer with a line of custom-order French-style mosaic tile tables designed and made here. The "Orchid" table (2)

of tile over hardwood is 36 inches wide and 28 inches tall and retails at \$3,600.

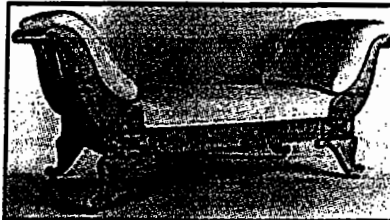
ARTEC also will take to market the Centreville Inn Collection of large-scale plantation-furniture reproductions. The line is custom-made in Louisiana

from antique boards salvaged from buildings along the Mississippi River. The big cypress kitchen center table (3) is about \$2,400 but could be made in a smaller version. ARTEC represents the line exclusively in Texas.

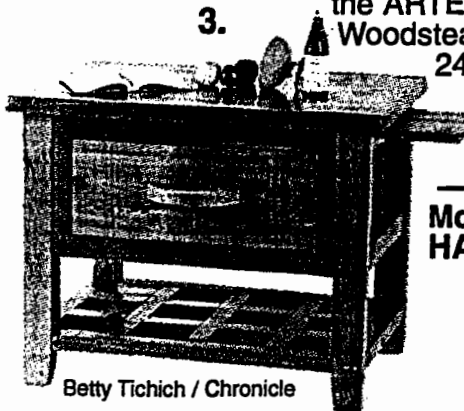
Both the mosaic tables and the plantation reproductions are available through the ARTEC gallery, 1610 Woodstead Court, Suite 240, and St.

James Furniture, 9190 Old Katy Road.

— MADELEINE
McDERMOTT
HAMM



Betty Tichich /
Chronicle



Betty Tichich / Chronicle